

FOR SALE

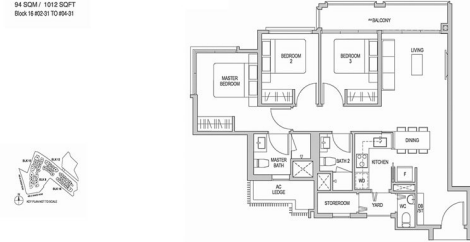
RESIDENTIAL - CONDOMINIUM 1,012SQFT (94SQM) / CALL FOR PRICE!

+65 9616 1915



3 - Bedroom

TYPE C1
94 SQM / 1012 SQFT
BOOK 1682/01 TO 994-01



RESIDENTIAL - CONDOMINIUM

8,10,12,14 RIFLE RANGE ROAD, CLEMENTI PARK,
UPPER BUKIT TIMAH, SINGAPORE 588376

- LISTING ID: SGLD47583483
- TENURE: LEASEHOLD 99
- TITLE: N/A
- SIZE BUILT-UP: 1,012SQFT (94SQM)
- SIZE LAND: N/A
- NO. OF FLOORS: 5
- FLOOR/LEVEL: N/A - MIDDLE FLOOR
- BED ROOMS: 3+1
- BATH ROOMS: 2
- MAIDS ROOMS: N/A
- PARKING SPACES: N/A
- LAYOUT TYPE: OTHER
- FACING: N/A
- VIEWING: N/A
- SELLING PRICE: **CALL FOR PRICE!**
- COMPLETION YEAR: 2024
- CONDITION: ORIGINAL CONDITION
- FURNISHING: PARTIALLY FURNISHED
- LISTING DATE: MAY 10, 2021

MAYFAIR GARDENS

Condominium for Sale: Partially furnished. 3 bedroom, 2 bathroom. Size: 1,012sqft (94sqm). Completed in 2024, this unit is in original condition. Tenure: Leasehold 99 Located in Singapore's district D21 near Clementi Park, Upper Bukit Timah in the area Central West (Central region).

INTERIOR FACILITIES

- Air-Conditioning
- Balcony

EXTERIOR FACILITIES

- 24 Hours Security
- Covered Car Park
- Jacuzzi
- Landscaped Garden

VISIT THIS PROPERTY AT: <https://www.valerietanproperty.com.sg/property/SGLD47583483>

VALERIE TAN - HUTTONS ASIA PTE LTD

3, Bishan Place #05-01 CPF Bishan Building
D20, 579838, Singapore

+65 9616 1915
WhatsApp Me

val_74@yahoo.com

<https://www.valerietanproperty.com.sg>



Scan QR Code

Huttons® Call for Viewing
The Agency of Choice +65-96161915