

# FOR SALE

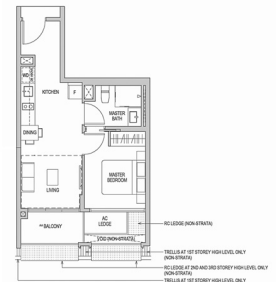
## RESIDENTIAL - CONDOMINIUM 506SQFT (47SQM) / CALL FOR PRICE!

+65 9616 1915



1 - Bedroom

TYPE A1  
47 SQM / 506 SQFT  
Block 18 02-08 TO 01-03  
Block 18 02-10 TO 01-10



### RESIDENTIAL - CONDOMINIUM

8,10,12,14 RIFLE RANGE ROAD, CLEMENTI PARK,  
UPPER BUKIT TIMAH, SINGAPORE 588376

- LISTING ID: SGLD04178845
- TENURE: LEASEHOLD 99
- TITLE: N/A
- SIZE BUILT-UP: 506SQFT (47SQM)
- SIZE LAND: N/A
- NO. OF FLOORS: 5
- FLOOR/LEVEL: N/A - HIGH FLOOR
- BED ROOMS: 1
- BATH ROOMS: 1
- MAIDS ROOMS: N/A
- PARKING SPACES: N/A
- LAYOUT TYPE: INTERMEDIATE
- FACING: N/A
- VIEWING: N/A
- SELLING PRICE: **CALL FOR PRICE!**
- COMPLETION YEAR: 2024
- CONDITION: ORIGINAL CONDITION
- FURNISHING: PARTIALLY FURNISHED
- LISTING DATE: MAY 10, 2021

### MAYFAIR GARDENS

Condominium for Sale: Partially furnished. 1 bedroom, 1 bathroom. Completed in 2024, this unit is in original condition. Tenure: Leasehold 99 Located in Singapore's district D21 near Clementi Park, Upper Bukit Timah in the area Central West (Central region).

### EXTERIOR FACILITIES

- 24 Hours Security
- Covered Car Park
- Jacuzzi
- Landscaped Garden

VISIT THIS PROPERTY AT: <https://www.valerietanproperty.com.sg/property/SGLD04178845>



### VALERIE TAN - HUTTONS ASIA PTE LTD

3, Bishan Place #05-01 CPF Bishan Building  
D20, 579838, Singapore

+65 9616 1915  
WhatsApp Me

val\_74@yahoo.com

L3008899K  
R007118A

<https://www.valerietanproperty.com.sg>



Scan QR Code

**Huttons**® Call for Viewing  
The Agency of Choice +65-96161915